

VERSASCREEN 1%, 2%, 5%, 10%

- Screen fabric with superior light control to minimise glare
- Offered in 4 openness factors to suit all building orientations
- Standard 100 by Oeko-Tex® certified, free from harmful substances
- Greenguard® certification for low-emission products
- Certified mould resistance









APPLICATIONS



Not suitable: SG 4905,
SG 4900, SG 4907

FABRIC PROPERTIES

	1%	2%	5%	10%
	Semi transparent			
	25% Polyester, 75% PVC			
	520 g/ m ²	510 g/ m ²	420 g/ m ²	400 g/ m ²
	0.70 mm	0.63 mm	0.55 mm	0.55 mm
	295 cm			
	8.9 cm, 12.7 cm, 250 cm, 300 cm			

FEATURES / TECHNICAL PROPERTIES

	8
	Flame retardant
	Optimised for workstations
	Various openness factors
	Antimicrobial (ASTM - SGS)
	Applicable in humid areas
	Oeko-Tex, Greenguard
	Special colours from 800 m
	Weldable

WASHING INSTRUCTIONS



Versascreen 1%, 2%, 5%, 10%
OPTICAL AND SOLAR COEFFICIENTS ($\pm 5\%$, DIN EN 410)

Versascreen 1%							
Colour	T_V	T_S	R_S	A_S	T_{UV}	F_C	g_{tot}
001	11.0	15.0	67.0	18.0	0.10	0.50	0.36
003	4.5	7.0	51.0	42.0	0.10	0.60	0.43
401	0.7	3.0	17.0	80.0	0.00	0.81	0.58
901	0.1	0.5	4.0	95.5	0.00	0.89	0.64

Versascreen 2%							
Colour	T_V	T_S	R_S	A_S	T_{UV}	F_C	g_{tot}
001	12.0	16.0	72.0	12.0	1.4	0.47	0.34
003	5.3	9.0	50.0	41.0	1.4	0.61	0.44
401	1.1	3.0	17.0	80.0	0.70	0.81	0.58
901	0.8	1.0	4.0	95.0	1.0	0.89	0.64

Versascreen 5%							
Colour	T_V	T_S	R_S	A_S	T_{UV}	F_C	g_{tot}
001	12.0	20.0	66.0	14.0	6.6	0.51	0.37
003	9.0	12.0	44.0	44.0	5.2	0.65	0.47
401	6.0	5.0	6.0	89.0	4.8	0.88	0.64
901	6.0	5.0	5.0	90.0	7.7	0.89	0.64

Versascreen 10%							
Colour	T_V	T_S	R_S	A_S	T_{UV}	F_C	g_{tot}
001	20.0	24.0	63.0	13.0	6.7	0.54	0.39
003	15.0	19.0	45.0	36.0	8.8	0.65	0.47
401	9.0	11.0	17.0	72.0	9.3	0.82	0.59
901	9.0	9.0	4.0	87.0	9.4	0.90	0.65

 T_V Visible light transmission

 R_S Solar reflectance

 T_{UV} UV transmission

 g_{tot} Total g-value

 T_S Solar transmission

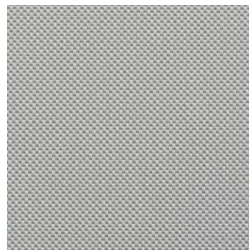
 A_S Solar absorption

 F_C Shading factor

 $F_C + g_{tot}$: Value calculated with glass: $0.72 / U_g = 1.6 \text{ W/m}^2 \text{ K}$, DIN EN 13363-1

Versascreen 1%, 2%, 5%, 10%

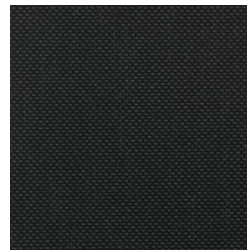
001 (1%)



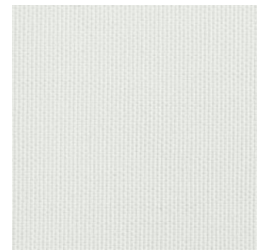
003 (1%)



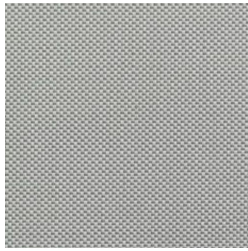
401 (1%)



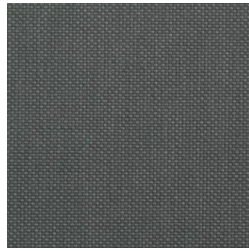
901 (1%)



001 (2%)



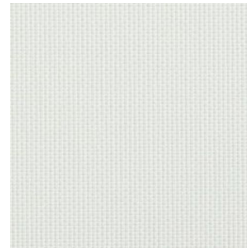
003 (2%)



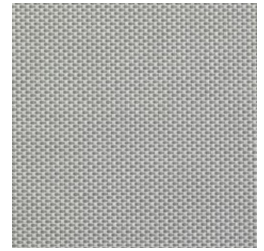
401 (2%)



901 (2%)



001 (5%)



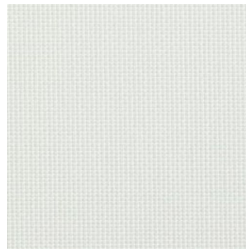
003 (5%)



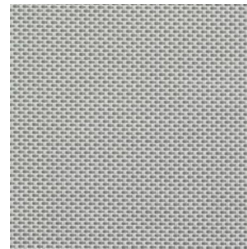
401 (5%)



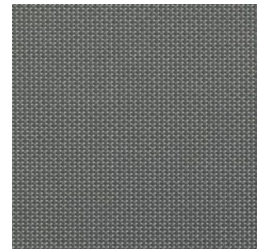
901 (5%)



001 (10%)



003 (10%)



401 (10%)



901 (10%)

Colours shown are not binding