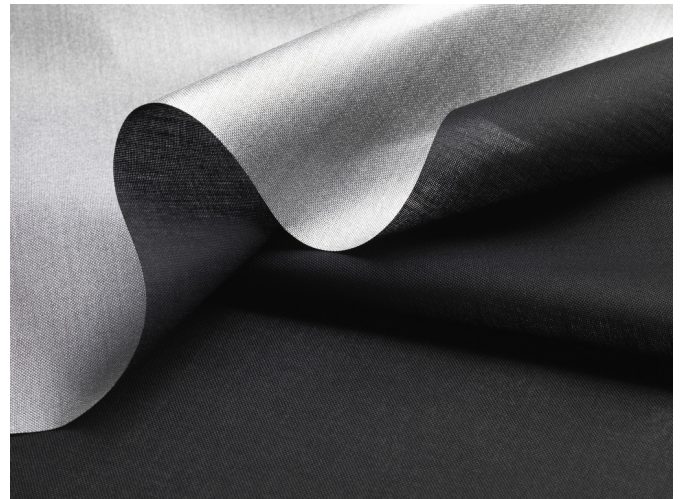


COLORAMA 1 ALU

- Exclusive Colorama Trevira CS fabric with an aluminium backing for increased heat and light reflection
- Technically superior fabric suitable for curtains and blinds
- Standard 100 by Oeko-Tex® certified, free from harmful substances

APPLICATIONS



FABRIC PROPERTIES

	Transparent
	Polyester Trevira CS, aluminium backed
	140 g/m ²
	0.40 mm
	285 cm
	290 cm
	290 cm

FEATURES / TECHNICAL PROPERTIES

	5-7
	Flame retardant
	Optimised for workstations
	Low heat transmittance
	Suitable for Wave
	Digital printing
	Oeko-Tex
	Special colours from 520 m

WASHING INSTRUCTIONS



FIRE PROTECTION

B-s1,d0 (EN 13501-1)
 Class 1 (EN 13773)
 B1 (DIN 4102-1)
 M2 (NF P 92-504)
 NFPA 701
 Type C (BS 5867-2)



Colorama 1 Alu
OPTICAL AND SOLAR COEFFICIENTS ($\pm 5\%$, DIN EN 410)

Colour	T_V	T_S	R_S	A_S	T_{UV}	F_C	g_{tot}
410	19.4	19.2	40.0	40.8	19.1	0.68	0.49
411	18.0	22.8	33.4	43.8	20.0	0.72	0.52
427	15.2	20.3	33.5	46.2	16.4	0.72	0.52
440	23.6	23.9	36.5	39.6	22.5	0.70	0.51

T_V Visible light transmission

R_S Solar reflectance

T_{UV} UV transmission

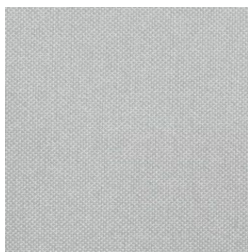
g_{tot} Total g-value

T_S Solar transmission

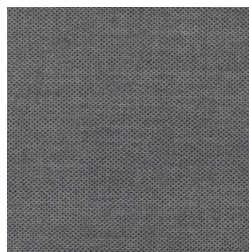
A_S Solar absorption

F_C Shading factor

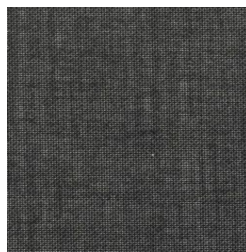
$F_C + g_{tot}$: Value calculated with glass: $0.72 / U_g = 1.6 \text{ W/m}^2 \text{ K}$, DIN EN 13363-1



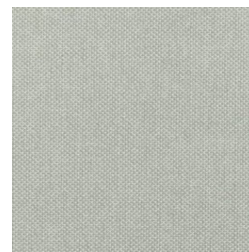
410



411



427



440

Colours shown are not binding