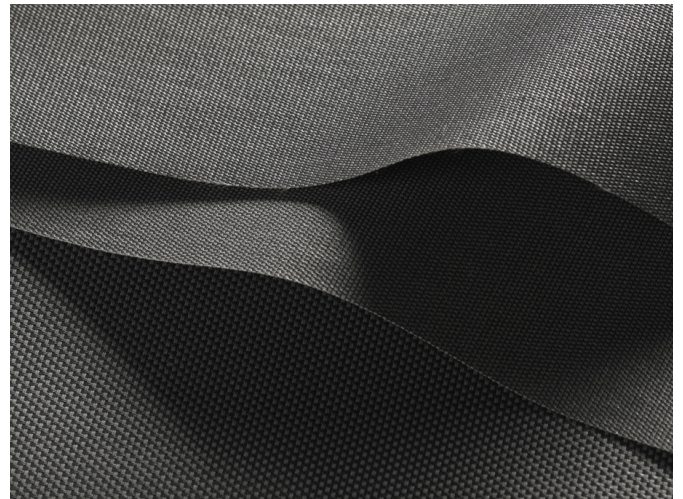








MULTISCREEN 1%, 5%, 10%

- Screen fabric with superior light control to minimise glare
- Offered in 3 openness factors to suit all building orientations
- Greenguard® certification for low-emission products










APPLICATIONS



FABRIC PROPERTIES

	1%	5%	10%
	Semi transparent		
	64% PVC, 36% Glass fibre		
	440 g/m ²	410 g/m ²	350 g/m ²
	0.55 mm	0.55 mm	0.47 mm
	315 cm		
	250 cm, 320 cm	8.9 cm, 12.7 cm, 250 cm, 320 cm	250 cm, 320 cm

FEATURES / TECHNICAL PROPERTIES

	7-8
	Flame retardant
	Optimised for workstations
	Various openness factors
	Applicable in humid areas
	Digital printing
	Greenguard
	Special colours from 10'000 m
	Weldable

WASHING INSTRUCTIONS



FIRE PROTECTION

C-s3,d0 (EN 13501-1)
 Class 1 (BS 476)
 Class 1 (UNI 9176/77)
 B1 (DIN 4102-1)
 M1 (NF P 92-503/5/7)
 Type B (BS 5867-2)
 NFPA 701



More information
silentgliss.com



Multiscreen 1%, 5%, 10%
OPTICAL AND SOLAR COEFFICIENTS ($\pm 5\%$, DIN EN 410)

Multiscreen 1%							
Colour	T_V	T_S	R_S	A_S	T_{UV}	F_C	g_{tot}
0702	11.8	14.0	47.0	39.0	0.00	0.64	0.46
0730	5.6	6.0	25.0	69.0	0.01	0.79	0.57
3001	2.8	3.0	9.0	88.0	0.01	0.89	0.64

Multiscreen 5%							
Colour	T_V	T_S	R_S	A_S	T_{UV}	F_C	g_{tot}
0202	20.6	21.0	69.0	10.0	0.05	0.50	0.36
0207	15.8	17.0	54.0	29.0	0.05	0.60	0.42
0220	19.1	22.0	62.0	16.0	0.06	0.54	0.39
0707	12.7	15.0	37.0	48.0	0.06	0.71	0.50
3001	5.6	6.0	10.0	84.0	0.05	0.89	0.62
3006	5.3	5.0	7.0	88.0	0.06	0.89	0.63
3030	5.4	6.0	5.0	89.0	0.04	0.89	0.64

Multiscreen 10%							
Colour	T_V	T_S	R_S	A_S	T_{UV}	F_C	g_{tot}
0202	28.7	29.0	63.0	8.0	0.11	0.54	0.39
0207	23.2	25.0	53.0	22.0	0.11	0.61	0.44
0220	26.4	29.0	58.0	13.0	0.10	0.57	0.41
0707	18.3	21.0	34.0	45.0	0.11	0.74	0.53
3001	10.2	10.0	10.0	80.0	0.10	0.89	0.64
3006	9.3	10.0	6.0	84.0	0.12	0.89	0.64
3030	10.8	10.0	5.0	85.0	0.10	0.89	0.64

 T_V Visible light transmission

 R_S Solar reflectance

 T_{UV} UV transmission

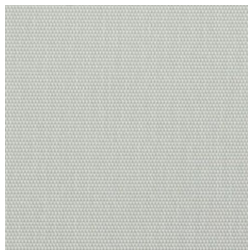
 g_{tot} Total g-value

 T_S Solar transmission

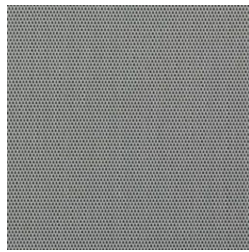
 A_S Solar absorption

 F_C Shading factor

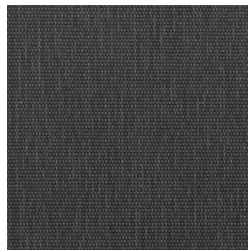
 $F_C + g_{tot}$: Value calculated with glass: 0.72 / $U_g = 1.6 \text{ W/m}^2 \text{ K}$, DIN EN 13363-1

Multiscreen 1%, 5%, 10%

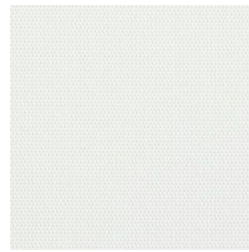
0702 (1%)



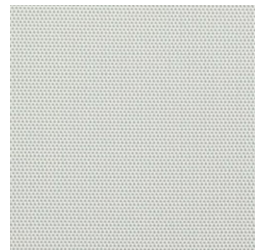
0730 (1%)



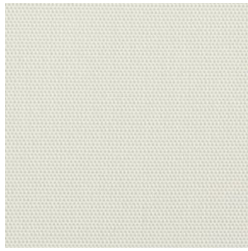
3001 (1%)



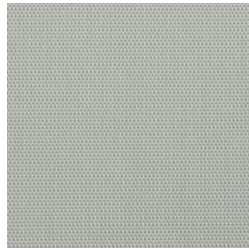
0202 (5%)



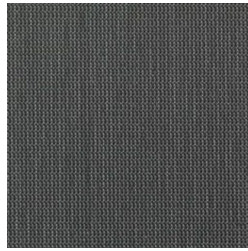
0207 (5%)



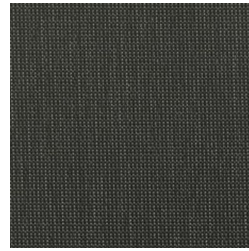
0220 (5%)



0707 (5%)



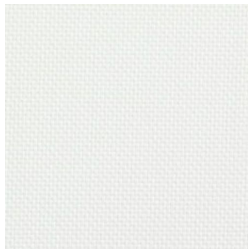
3001 (5%)



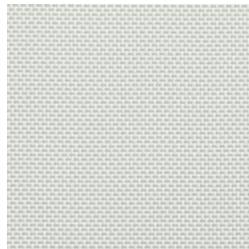
3006 (5%)



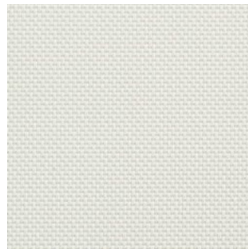
3030 (5%)



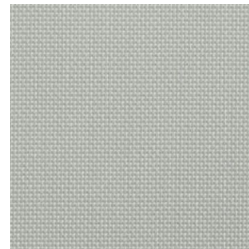
0202 (10%)



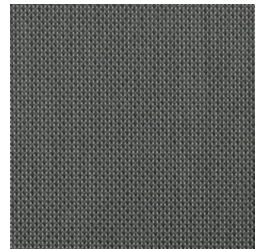
0207 (10%)



0220 (10%)



0707 (10%)



3001 (10%)



3006 (10%)



3030 (10%)

Colours shown are not binding