

# SOMNIA

- Blackout fabric with subtle structured appearance
- Standard 100 by Oeko-Tex® certified, free from harmful substances

## APPLICATIONS



## FABRIC PROPERTIES

● Blackout

 Polyester acrylic-coated

 445 g/m<sup>2</sup>

 0.70 mm

 ←max.→ 275 cm

 280 cm

## FEATURES / TECHNICAL PROPERTIES

 4-5

 Flame retardant

 Fabric must be turned

 Oeko-Tex

 Special colours from 1'000 m

## WASHING INSTRUCTIONS

      
 -1.5%      -0.75%

Iron only on the face (front) side!

## FIRE PROTECTION

Class 1 (EN 13773)

Class 1 (UNI 8456)

NFPA 701

Type B (BS 5867-2)



**Somnia**
**OPTICAL AND SOLAR COEFFICIENTS ( $\pm 5\%$ , DIN EN 410)**

Colour	$R_s$	$A_s$	$F_c$	$g_{tot}$
1	66.2	33.8	0.50	0.36
2	66.2	33.8	0.50	0.36
3	66.2	33.8	0.50	0.36
4	66.2	33.8	0.50	0.36
10	70.4	29.6	0.47	0.34
12	70.4	29.6	0.47	0.34
13	70.4	29.6	0.47	0.34
15	70.4	29.6	0.47	0.34
16	70.4	29.6	0.47	0.34
18	62.6	37.4	0.52	0.37
20	62.6	37.4	0.52	0.37
21	62.6	37.4	0.52	0.37
22	70.4	29.6	0.47	0.34
23	66.2	33.8	0.50	0.36
24	62.6	37.4	0.52	0.37

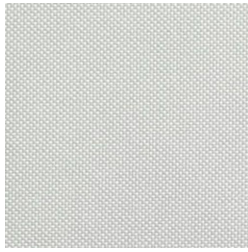
$R_s$  Solar reflectance

$A_s$  Solar absorption

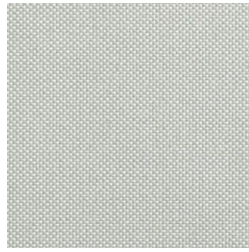
$F_c$  Shading factor

$g_{tot}$  Total g-value

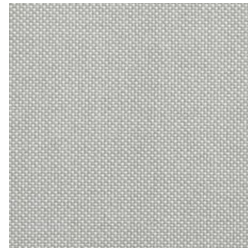
$F_c + g_{tot}$ : Value calculated with glass:  $0.72 / U_g = 1.6 \text{ W/m}^2 \text{ K}$ , DIN EN 13363-1

**Somnia**

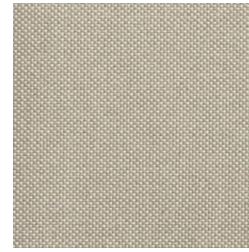
1



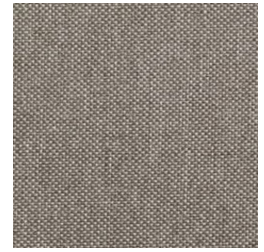
2



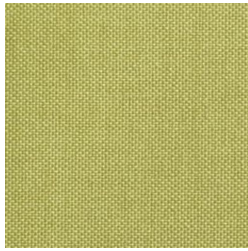
3



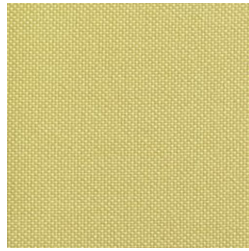
4



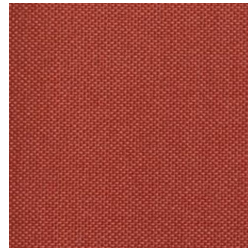
10



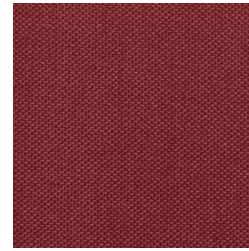
12



13



15



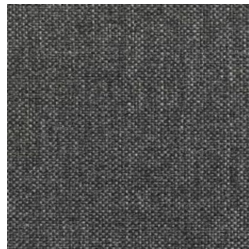
16



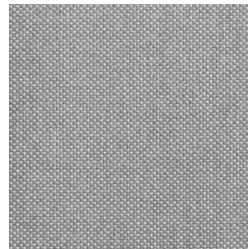
18



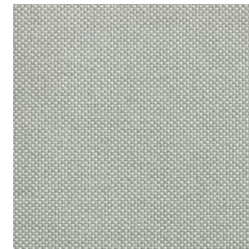
20



21



22



23



24

Colours shown are not binding