

# COLORAMA 1 MULTICOLOUR

- Exclusive Colorama Trevira CS sheer fabric woven with a multicolour yarn for attenuated colour and texture
- Cradle to Cradle Certified™ Bronze
- Standard 100 by Oeko-Tex® certified, free from harmful substances
- Washable up to 72°

## APPLICATIONS
























## FABRIC PROPERTIES

	Transparent
	Polyester Trevira CS
	130 g/m <sup>2</sup>
	0.45 mm
	325 cm
	330 cm
	330 cm

## FEATURES / TECHNICAL PROPERTIES

	6
	Flame retardant
	Applicable in humid areas
	Fabric must be turned
	Fabric must be turned
	Oeko-Tex, Cradle to Cradle

## WASHING INSTRUCTIONS

							
	-1%	-2%	-2.5%	-0.5%			
							
	-1%			-0.5%			
							

## FIRE PROTECTION

B-s1,d0 (EN 13501-1)  
 Class 1 (EN 13773)  
 Class 1 (UNI 8456)  
 B1 (DIN 4102-1)  
 M1 (NF P 92-503/5/7)  
 Type C (BS 5867-2)  
 NFPA 701



**Colorama 1 Multicolour**
**OPTICAL AND SOLAR COEFFICIENTS (± 5%, DIN EN 410)**

Colour	T <sub>v</sub>	T <sub>s</sub>	R <sub>s</sub>	A <sub>s</sub>	T <sub>UV</sub>	F <sub>c</sub>	g <sub>tot</sub>
<b>111</b>	42.3	42.1	52.2	5.7	24.8	0.62	0.45
<b>131</b>	36.0	36.9	42.4	20.7	21.8	0.68	0.49
<b>161</b>	33.1	33.7	35.6	30.7	21.0	0.72	0.52
<b>181</b>	29.5	29.6	28.3	42.1	20.4	0.76	0.55
<b>211</b>	42.8	43.2	48.7	8.1	24.4	0.64	0.46
<b>261</b>	33.1	33.2	35.0	31.8	20.5	0.72	0.52
<b>431</b>	32.3	36.6	40.9	22.5	24.1	0.69	0.49
<b>461</b>	31.0	36.0	39.4	24.6	19.0	0.70	0.50

**T<sub>v</sub>** Visible light transmission

**R<sub>s</sub>** Solar reflectance

**T<sub>UV</sub>** UV transmission

**g<sub>tot</sub>** Total g-value

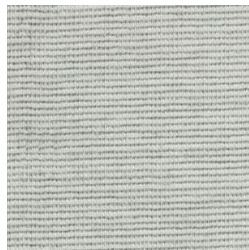
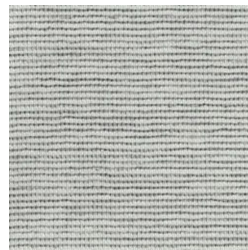
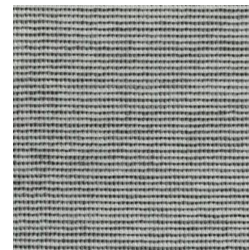
**T<sub>s</sub>** Solar transmission

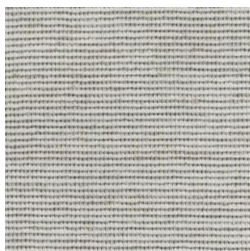
**A<sub>s</sub>** Solar absorption

**F<sub>c</sub>** Shading factor

 F<sub>c</sub> + g<sub>tot</sub>: Value calculated with glass: 0.72 / U<sub>g</sub> = 1.6 W/m<sup>2</sup> K, DIN EN 13363-1

**Colorama 1 Multicolour**

**111**

**131**

**161**

**181**

**211**

**261**

**431**

**461**

Colours shown are not binding